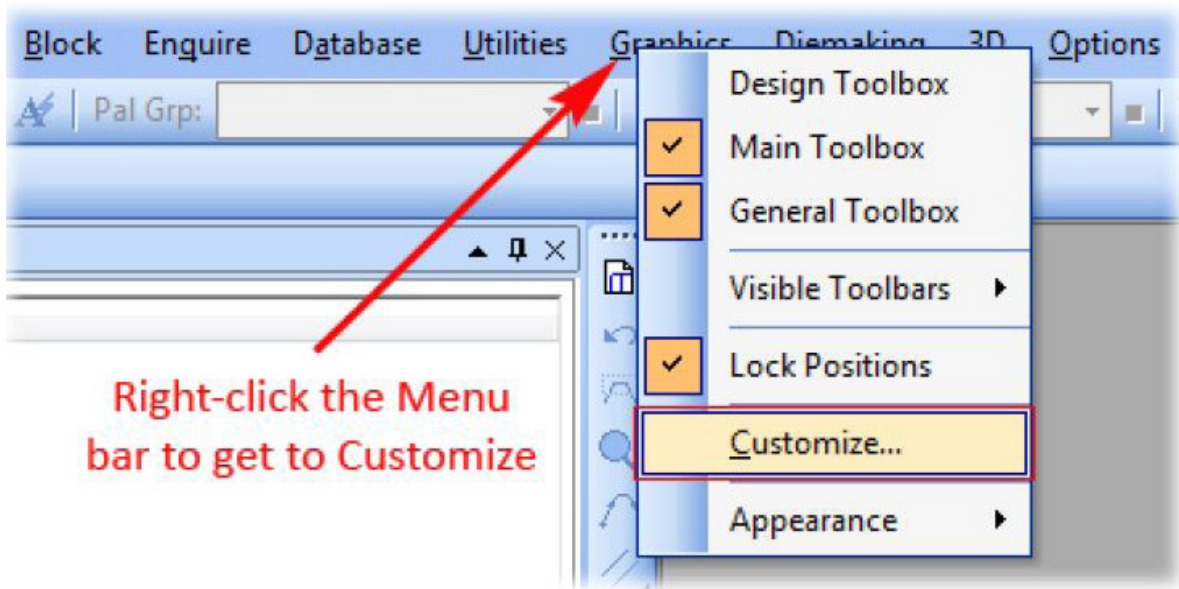


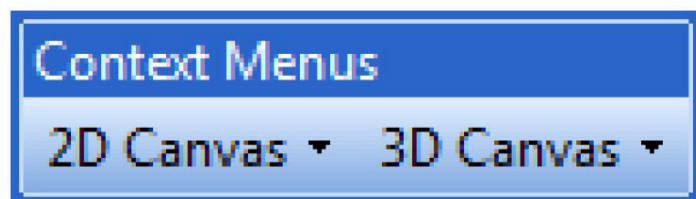


Customizing the Context Menus

1. Right-click on the Impact menu bar at the top of the screen, and choose 'Customize' from the Context Menu. This will display a Customize window.



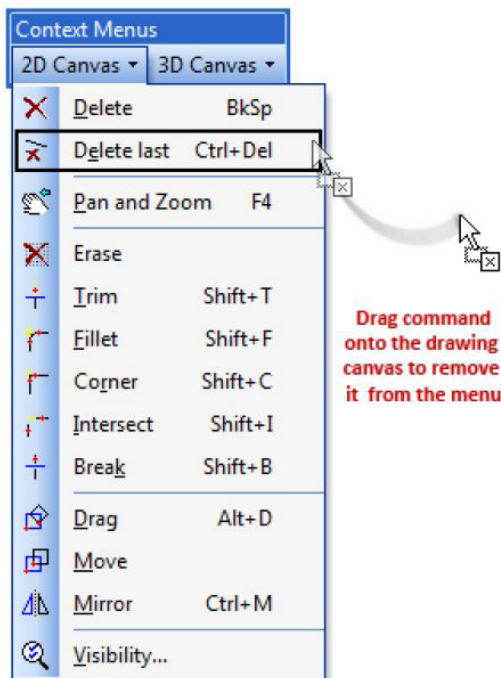
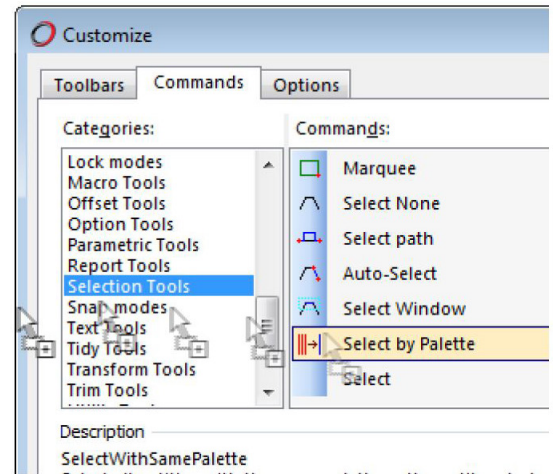
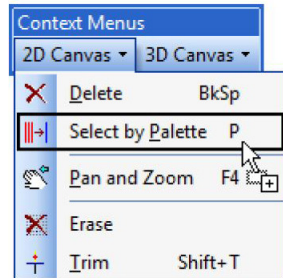
2. Next, you'll see a floating toolbox on your screen named 'Context Menus'. This menu holds the 2D and 3D context menus for the drawing canvas.



Note: Commands listed in the 2D Canvas menu are displayed when you right-click on any 2D layer or custom layer type. Commands listed in the 3D canvas are displayed when you right-click on any 3D layer.



3. To add a command to the Context Menu, go to the Commands tab of the Customize window. Locate the desired Category and Command. Drag and drop it into the 2D Canvas or 3D Canvas menu. Click on the **'Selection Tool'** category and drag and drop the **'Select by Palette'** tool into the 2D canvas menu.



4. To remove a command from the Context Menu, click on the 2D Canvas menu, and click on the command named **'Delete Last'**. Drag it onto the drawing canvas.

5. Repeat the add/remove process for commands until you achieve the desired Context Menu for both 2D and 3D. You can add menus to the context menus for grouping of similar commands.

6. Close the **Customize** window when complete

